

PW-568ERT-ML

AUTOMATIC CARTON ERECTOR - VERTICAL SEAL

for uniform carton size batches

New Tape Head—Patent No. 123859, 145797



FEATURES:

- Carton erector automatically form and bottom seal different styles and sizes of cartons. After that is perfectly-form empty cartons that are ready to be filled and can integrate any carton sealers to seal top flaps. So form, pack and seal carton is all in one operation.
- With no tape detector, erecting failure detector, bottom sealing failure detector, no cartons of the magazine detector, All ensure to solve the problems at the short time.
- Human machine interface Mechanism (touch control panel)
- New taping head incorporating a V shaped plate (patented) designed to keep the tape straight and in position for consistent sealing of every carton. This design is superior to previous blower devices.

APEXPACK



CE

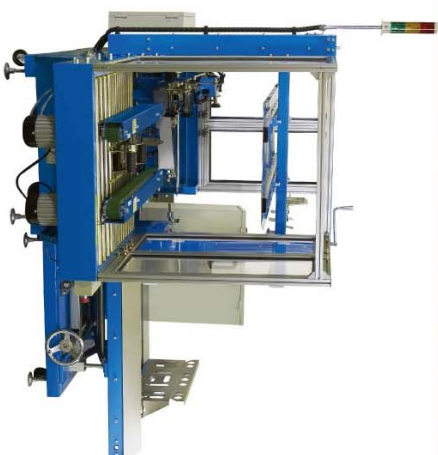


**TAIWAN
EXCELLENCE
2007**

PW-568ERT-ML

AUTOMATIC CARTON ERECTOR - VERTICAL SEAL

for uniform carton size batches



FEATURE OF PW-568ERT:

- Driven by power side belts, main drive mechanism adopt self-aligning ball bearing bracket providing exact and precise sealing, lower noise and lengthening belt life.
- Equipped with double type vacuum sucking arm to erect cartons more firm.
- Professional safety fence with aluminum frame provide more safety working environment.
- Easy change & simple adjustment to increase production efficiency.
- Minimum maintenance, durability and run good performance.
- Right hand or left hand performance (option)

PW-568ERT Large, Medium, Small Machines (option)

PW-568ERT-LL (Large, left hand performance)

Max. Sealing Size = L600 x W450 x H500 mm
Min. Sealing Size = L350 x W300 x H250 mm

PW-568ERT-ML (Medium)

Max. Sealing Size = L510 x W380 x H500 mm
Min. Sealing Size = L250 x W200 x H120 mm

PW-568ERT-SL (Small, left hand performance)

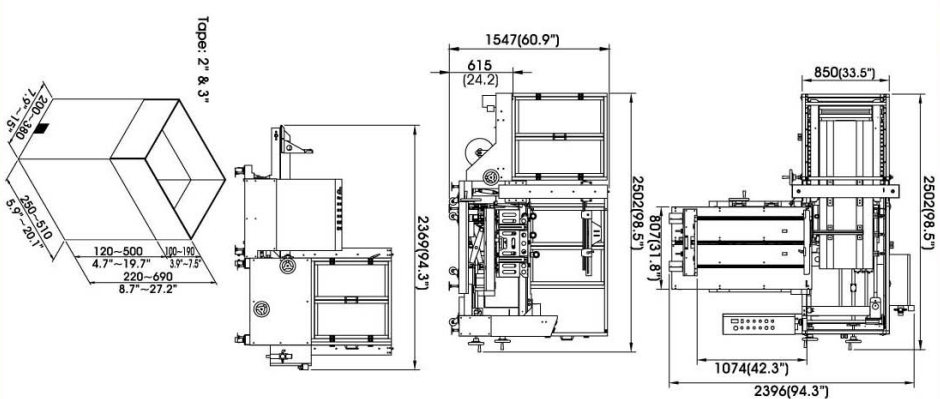
Max. Sealing Size = L350 x W300 x H300 mm
Min. Sealing Size = L150 x W110 x H110 mm

SPECIFICATIONS :

• Other spec is on request

Model	PW-568ERT-ML
Power supply	single phase, 110V/220V (50/60Hz) 3 phase, 220V/380V/440V(50/60Hz)
Capacity	Three motors 10M/per min at 60Hz-LL, 300 x W 300 x H 300 mm) 9~12 cartons/per min. 2' or 3' (option)
Tape width	150 pos (3 ply-7 mm thickness) or 50 pos (6 ply-15 mm thickness)
Loading magazine	615 mm
Working height	1450V
Consumption	L 510 x W 380 x H 500 mm
Max. sealing size	L 250 x W 200 x H 120 mm
Min. sealing size	L 2740 x W 2278 x H 1880 mm
Shipping size	620 kgs
N.W.	1190 kgs
G.W.	1190 kgs

Note: Specifications subject to change without notice.



Distributor: