

SFM

Sachet Full Monitoring

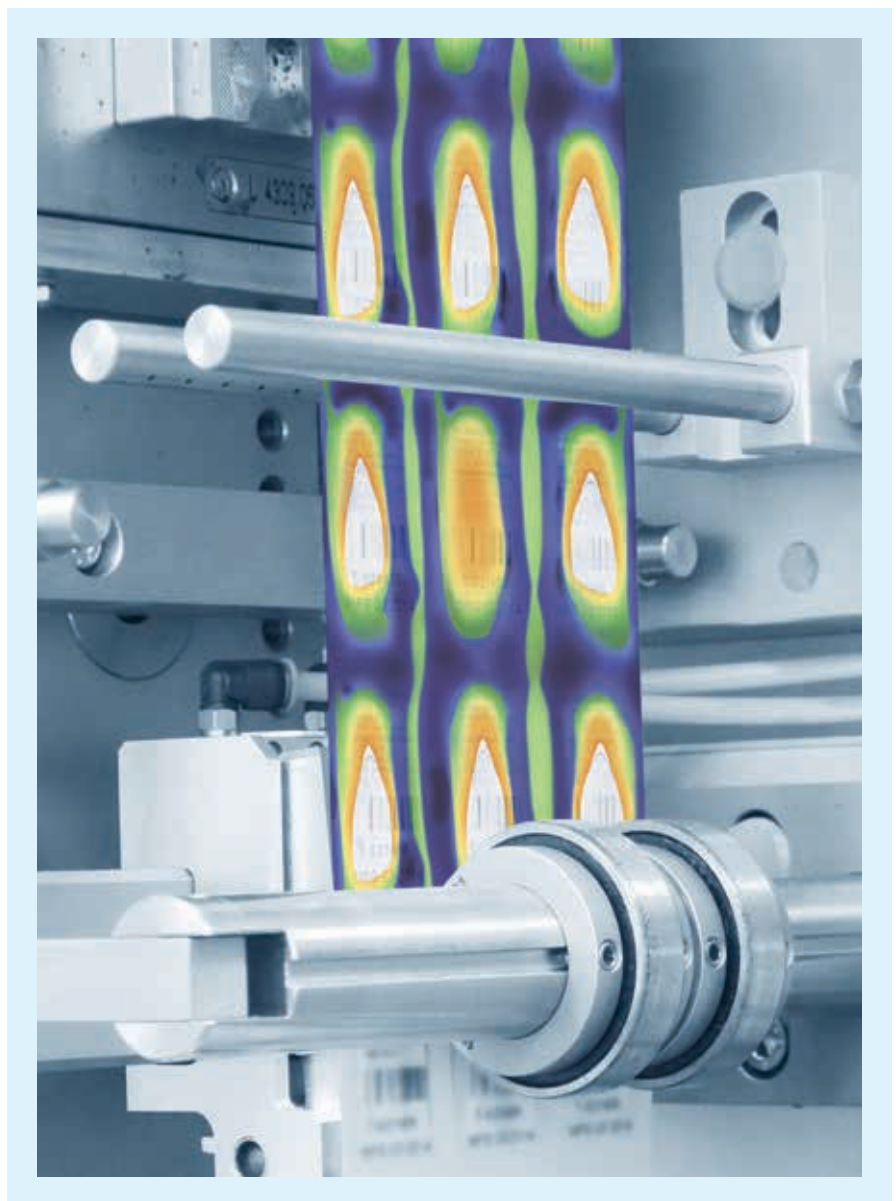


IMAGE IT



SFM

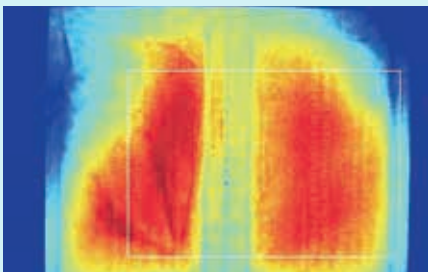
The SFM (Sachet Full Monitoring) inspects the fill level and seal integrity of sachet and pouch containers in-line, **without slowing down the production rate. 100% sachets inspected**, timely and without interfering with the process or the product.

The SFM makes use of DIR's advanced Thermal Imaging system and propriety image process algorithms.

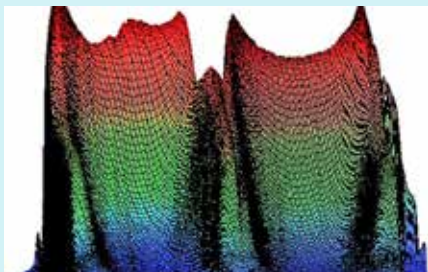
- The operation of the SFM is simple, very intuitive and straightforward.
- The SFM is very compact and can be integrated into any existing line.
- The SFM is also offered as an integrated option in MEDISEAL sachet machines.



SFM system in the Mediseal L160 Sachet Machine



Thermograph of a partially filled sachet (left) and a correct filled sachet (right)



3D thermal picture of a bad seal (left) and good seal (right)

Sachets and pouches are widely used in pharmaceutical and cosmetics products. Generally, checkweighers are used to verify that the sachet or pouch is properly filled, however, they are bulky, expensive, and they might not be accurate enough.

This becomes critical in cases in which the sachets should contain an accurate dose of a medicine.

DIR Technologies developed the SFM to provide a fast, compact and efficient solution to in-line, 100% monitoring of the sachet fill level and seal integrity. The SFM takes advantage of the heat developed during the sachet/pouch sealing process, so it's completely passive and does not interfere with the product or the process in any way.

Characteristics

Laminate material » Aluminum, PE, PET, Paper, Tyvek Laminate

Width » Up to 300mm with a single camera(*)

Content » Cream, Gel, Granulates, Powder

Line speed » < 100 cycles/minute

Accuracy » +/- 10% (Subject to system conditions)

SFM Camera size » 110 x 45 x 45 cm³ (LxWxH)

(*) Subject to specific system geometry

Advantages of DIR's technology

- Nondestructive, noninterfering
- In-line, Real-Time, 100% testing
- Very small foot-print, adaptable to any existing production line
- Can be customized to a wide variety of packaging processes
- No slowdown of production

SFM

About (DIR)

DIR Technologies utilizes sophisticated **infra-red detectors** and **thermal imaging** technology combined with **high throughput imaging & analysis** software, to provide innovative solutions for the **quality control and process monitoring** of pharmaceutical manufacturing and packaging processes



The right configuration - combined high performance and space-savings. Mediseal's vertical edge-sealing sachet machines have been acknowledged for decades as the first choice for packaging pharmaceutical and cosmetic products. Dosing systems for powders and granules, developed in-house, demonstrably achieve the highest dosing accuracy and are perfectly suited to packaging high-value products.

www.mediseal.de

Contact us for additional Information

DIR Technologies, LTD., MATAM Towers 3, 6F
P.O. Box 15129, Haifa 3190501, Israel
T +972 4 850 1190 | F +972 4 850 1192
www.dir-technologies.com