

HSAJET® Printheads

HP TIJ 2.5

The HSAJET® printheads are based on
HP thermal inkjet technology TIJ 2.5

HSAJET® and HP TIJ 2.5 technology

The HSAJET® printers use HP thermal inkjet technology TIJ 2.5, providing high-resolution printing up to 600 dpi for sharp text, crisp barcodes and intense spot colours.

Versatile and affordable, HP's advanced inkjet technology powers a wide range of industrial and commercial printing applications - from simple text documents to vivid, complex print jobs on many types and sizes of media.

HSAJET® printheads

The HSAJET® printheads are available in three different versions: Top - Side - Side/low

The physical dimensions of each version along with cable connector directions provide advantages to each printhead. This facilitates the installation.

The robust stainless steel design meets the demands for production environments.

HSAJET® F-type printheads

Every stall in our new printheads has a switch. This has been added to avoid damage to the printhead if the ink cartridge is being taken out of the stall during print mode. If a cartridge is taken out, the power to the printhead is cut off.

All our new controllers use the F-type printheads.



HP key-features

- Cost-effective: No warm-up cycle and no down time
- Easy to use: No special training required to operate and maintain thermal inkjet printers
- Fast: Hundreds of tiny nozzles firing at high frequency allow high-quality printing at high speeds
- Reliable: TIJ is less sensitive to air bubbles in the firing chamber than other printing technologies, avoiding print quality problems and delays caused by trapped air
- Flexible: Supports a wide variety of media
- High quality: TIJ places smaller drops more accurately, producing consistently superb image and text quality
- Environmentally safe: With thermal inkjet, there is no need for service technicians qualified to handle volatile solvents, and no noxious fumes
- Lower cost of ownership: A thermal inkjet printer can cost much less than other printing equipment, reducing the market entry cost



Technical Details

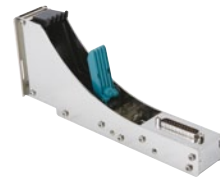
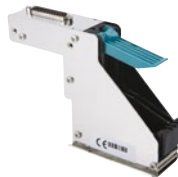
F-TYPE PRINTHEADS CONFIGURATIONS

TOP/DOWN

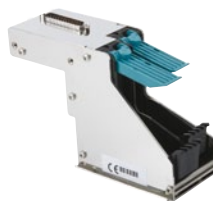
SIDE

SIDE/LOW

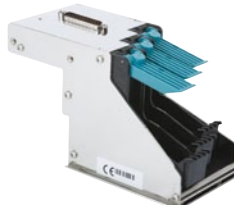
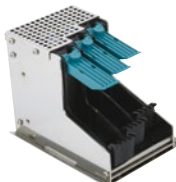
1-PEN



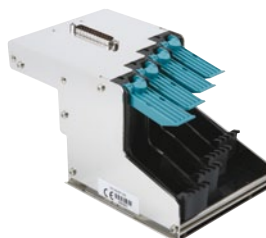
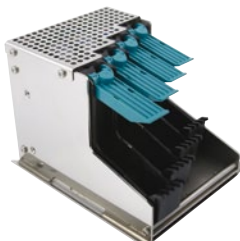
2-PEN



3-PEN

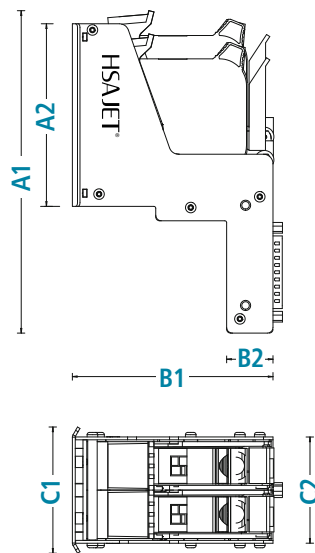
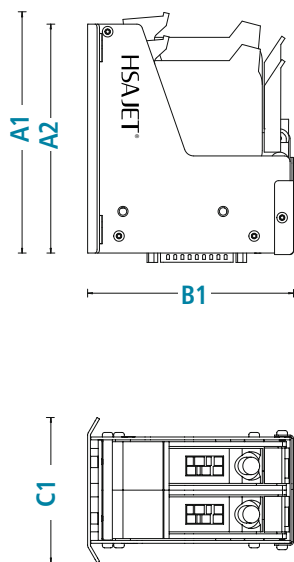


4-PEN



Technical Details

F-TYPE PRINTHEADS DIMENSIONS

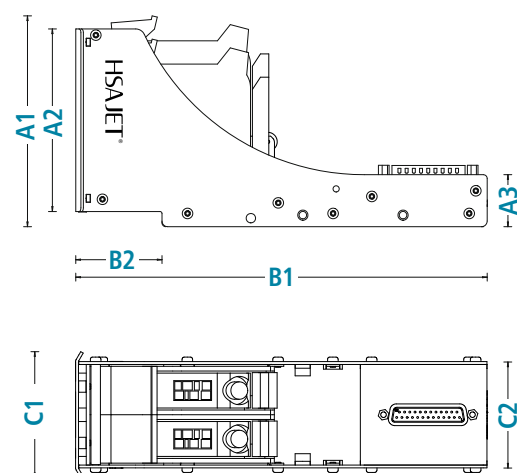


TOP/DOWN

Dimensions in mm (inches)	A1	A2	B1	C1	C2
1-PEN	115 (4.51)	108 (4.24)	106 (4.18)	43 (1.68)	32 (1.26)
2-PEN	128 (5.04)	121 (4.77)	109 (4.29)	77 (3.02)	58 (2.29)
3-PEN	140 (5.52)	133 (5.24)	109 (4.29)	102 (4.03)	84 (3.30)
4-PEN	152 (6.0)	146 (5.73)	109 (4.29)	128 (5.05)	109 (4.31)

SIDE

Dimensions in mm (inches)	A1	A2	B1	B2	C1	C2
1-PEN	158 (6.23)	84 (3.32)	106 (4.18)	25 (0.97)	45 (1.76)	32 (1.26)
2-PEN	171 (6.71)	97 (3.80)	106 (4.18)	25 (0.97)	67 (2.63)	56 (2.21)
3-PEN	183 (7.20)	109 (4.29)	106 (4.18)	25 (0.97)	94 (3.68)	82 (3.22)
4-PEN	196 (7.70)	122 (4.79)	106 (4.18)	25 (0.97)	119 (4.69)	107 (4.23)



SIDE/LOW

Dimensions in mm (inches)	A1	A2	A3	B1	B2	C1	C2
1-PEN	99 (3.91)	84 (3.32)	28 (1.08)	218 (8.57)	46 (1.80)	45 (1.76)	32 (1.26)
2-PEN	112 (4.39)	97 (3.80)	28 (1.08)	218 (8.57)	46 (1.80)	67 (2.63)	56 (2.21)
3-PEN	124 (4.87)	109 (4.29)	28 (1.08)	218 (8.57)	46 (1.80)	94 (3.68)	82 (3.22)
4-PEN	136 (5.36)	122 (4.79)	28 (1.08)	218 (8.57)	46 (1.80)	119 (4.69)	107 (4.23)

Technical Details



F-TYPE PRINTHEADS

Technology

HP TII 2.5

Print height

12.7-50.8 mm / 1/2" - 2"

1 to 4 pens

Print distance

0.5-2.0 mm

(nozzle to print surface)

Interface

SUB D25

Signals

Switch signal

Complies to

CE directives

Housing

Stainless steel

Environmental conditions

Operating temperature: 10-40° C

Humidity: 10-90%

Non-condensing

Weight

see details below

Vertical resolution (DPI)	Horizontal resolution 75-2400 DPI (variable)* speed examples (m/min)			
	75 DPI	300 DPI	600 DPI	2400 DPI
600 DPI	304	76	38	10
300 DPI high speed	608	152	76	19
300 DPI (row A)	304	76	38	10
300 DPI (row B)	304	76	38	10

WEIGHT

in Kg / lbs	Top kg (lbs)	Side kg (lbs)	Side-Low kg (lbs)
1-pen (1/2")	0,37 (0,81)	0,36 (0,79)	0,48 (1,05)
2-pen (1")	0,62 (1,37)	0,60 (1,32)	0,73 (1,60)
3-pen (1 1/2")	0,82 (1,81)	0,99 (2,02)	0,91 (2,19)
4-pen (2")	1,04 (2,30)	1,07 (2,35)	1,28 (2,83)

Accessories:

- Bridges in two standard lengths, special length available on request.
- Printhead mounts (for bridge) for downprint mounting.
- Foot plates/soles for left or right travel.
- HSAJET® HP printheads with 1 to 4 pens can be combined and mounted on a common footplate.
This enables printheads of 7, 8 or 9 pens.

DISTRIBUTOR:



HSA Systems Denmark

DK-2740 SKOVLUNDE | +45 4494 0222 || DK-5260 ODENSE S | +45 6610 3401

HSA Systems France

F-93160 NOISY-LE-GRAND | +33 1 4815 5050

www.hsasystems.com | mail@hsasystems.com