

FRM-1120 SERIES continuous band sealer



FRM-1120W

SOLID-INK CODING CONTINUOUS BAND SEALER



FRS-1120W

COLOR RIBBON PRINTING CONTINUOUS BAND SEALER



FRM-1120L

SOLID-INK CODING CONTINUOUS BAND SEALER



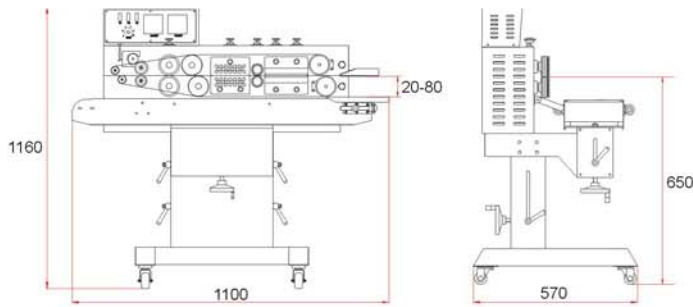
FRM-1120LD

SOLID-INK CODING CONTINUOUS BAND SEALER

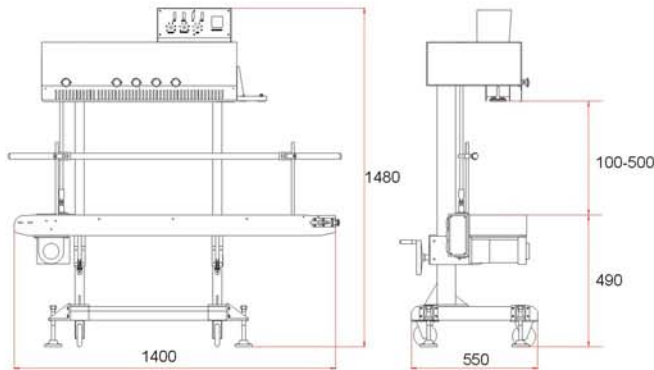
The machines adopt electronic constant temperature control system and stepless speed adjusting transmission mechanism; the height of conveyor also can adjustable. It can seal plastic films of various materials.

The machines adopt solid-ink coding device or color ribbon printing device can print the desired designs simultaneously with sealing, the characters clear and conspicuous. The colors are selectable and uneasy to decay and unchangeable, instant printing and instant dry, with strong adhesion. If necessary, counting device can be fixed to it as well.

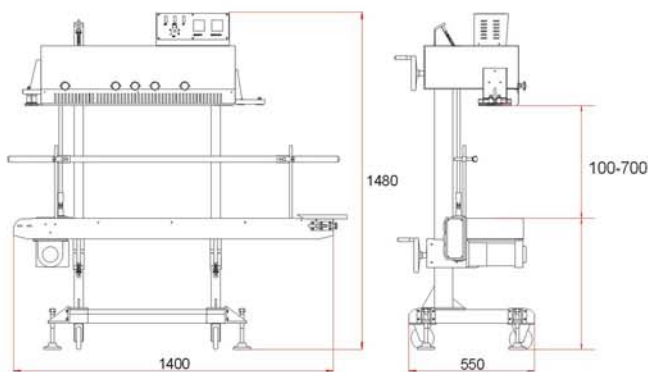
The height of model FRM-1120LD's head and conveyor both can adjustable, so as to making widely using, it also can match to operate with production line.



FRM-1120W



FRM-1120L



FRM-1120LD

FRM-1120W FRS-1120W FRM-1120L FRM-1120LD

Voltage (V/Hz)	AC 220/50 110/60		
Motor Power (W)	100	230	
Sealing Power (W)	300×2		
Printing Heating Power (W)	40×2	50×2	40×2
Speed (m/min)	0-10		
Sealing Width (mm)	8 10		
Temperature Range (°C)	0-300		
Printing Type	Solid Ink Roller	Hot Foil Printer	Solid Ink Roller
Distance from Sealing Center to line Conveyor (mm)	20-80	100-500	100-700
Height from Head to Floor (mm)	—		700-1100
Conveyor Size (LxW) (mm)	1100×205	1400×250	1900×300
Max.Conveyor Loading for Single Bag (LxW) (mm)	2.5	5	
Overall Conveyor Loading (Kg)	7.5	15	
Dimension (LxWxH) (mm)	1100×610×1030	1450×680×1480	
Net Weight (Kg)	85	100	108

FR-1120/AL SERIES

CONTINUOUS BAND SEALER WITH TWO SETS OF HEATING BLOCKS



FR-1120AL/S

CONTINUOUS BAND SEALER WITH TWO SETS OF HEATING BLOCKS



FR-1120AL/SD

CONTINUOUS BAND SEALER WITH TWO SETS OF HEATING BLOCKS



FR-1120AL/SD

CONTINUOUS BAND SEALER WITH TWO SET OF HEATING BLOCKS



FR-1120AL/SL

HEAVY-DUTY CONTINUOUS BAND SEALER WITH TWO SETS OF HEATING BLOCKS

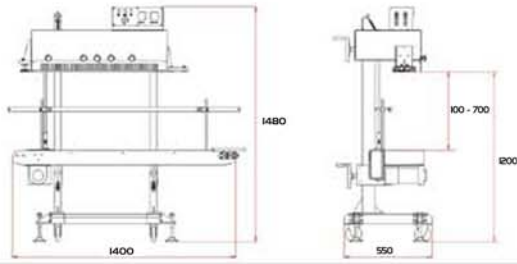


FR-1120AL/ST

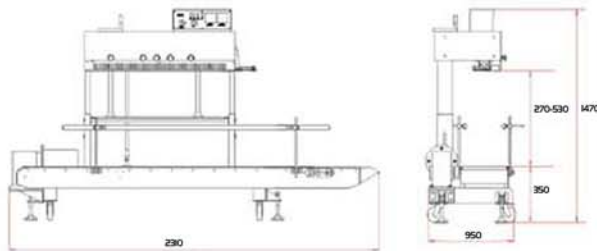
CONTINUOUS BAND SEALER WITH TWO SETS OF HEATING BLOCKS

The machine is specially designed for thicker bags, which is suitable for sealing weight of under 5 kgs, 10 kgs & 20 kgs respectively.

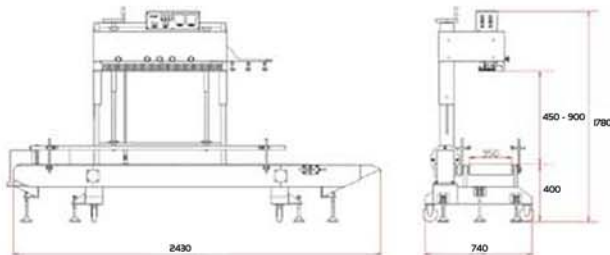
The height of model FR-1120AL/SD's head and conveyor both can adjustable, so as to making widely using, it also can match to operate with production line.



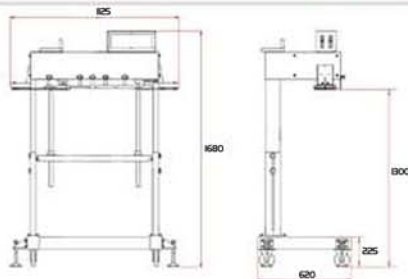
FR-II20AL/SD



FRM-II20AL/SM



FR-II20AL/SL



FR-II20AL/ST

FR-1120AL/S FR-1120AL/SD FR-1120AL/SM FR-1120AL/SL FR-1120AL/ST

	FR-1120AL/S	FR-1120AL/SD	FR-1120AL/SM	FR-1120AL/SL	FR-1120AL/ST
Voltage (V/Hz)	AC 220/50 110/60				
Motor Power (W)	230	370	750	100	
Sealing Power (W)	300×4				
Speed (m/min)	0-10		8	0-10	
Sealing Width (mm)	8 10				
Temperature Range (oC)	0-300				
Distance from Sealing Center to the Conveyor (mm)	100-500	100-700	270-530	450-900	-
Distance from Sealing Center to the Conveyor (mm)	1300				
Conveyor Size (LxH) (mm)	1400×250	1900×300	2400×350	-	-
Max.Conveyor Loading for Single Bag (Kg)	≤5	≤10	≤20	-	-
Overall Conveyor Loading (Kg)	≤15	≤30	≤60	-	-
Dimension (LxWxH) (mm)	1450×680×1480	1950×550×1100	2430×740×1450	1125×620×1680	
Net Weight (Kg)	100	107	150	250	80