

# FRM-II20 SERIES continuous band sealer



**FRM-II20W**

SOLID-INK CODING CONTINUOUS BAND SEALER



**FRS-II20W**

COLOR RIBBON PRINTING CONTINUOUS BAND SEALER



**FRM-II20L**

SOLID-INK CODING CONTINUOUSE BAND SEALER



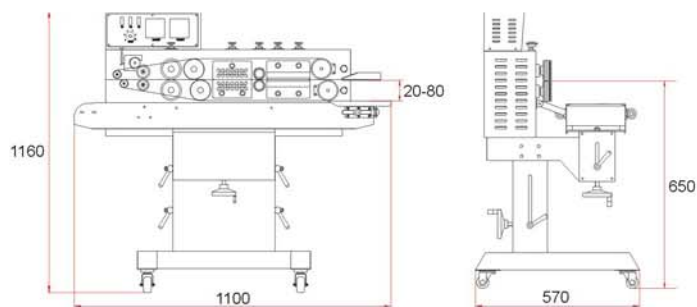
**FRM-II20LD**

SOLID-INK CODING CONTINUOUSE BAND SEALER

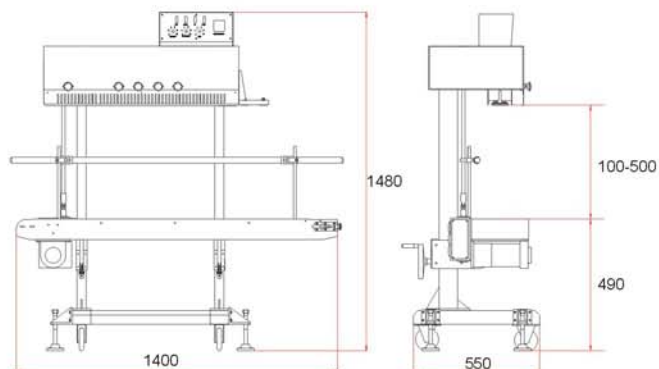
The machines adopt electronic constant temperature control system and stepless speed adjusting transmission mechanism; the height of conveyor also can adjustable. It can seal plastic films of various materials.

The machines adopt solid-ink coding device or color ribbon printing device can print the desired designs simultaneously with sealing, the characters clear and conspicuous. The colors are selectable and uneasy to decay and unchangeable, instant printing and instant dry, with strong adhesion. If necessary, counting device can be fixed to it as well.

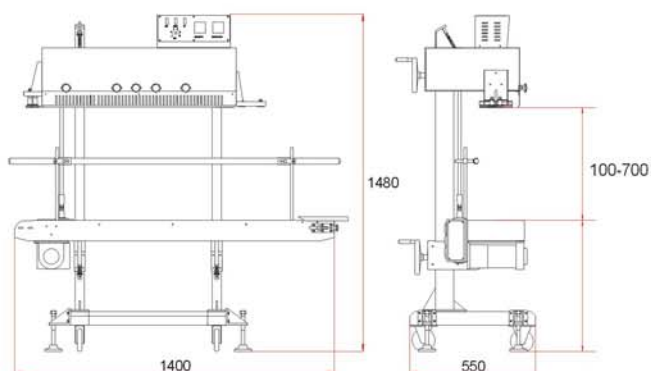
The height of model FRM-1120LD's head and conveyor both can adjustable, so as to making widely using, it also can match to operate with production line.



**FRM-1120W**



**FRM-1120L**



**FRM-1120LD**

**FRM-1120W    FRS-1120W    FRM-1120L    FRM-1120LD**

Voltage (V/Hz)	AC 220/50 110/60		
Motor Power (W)	100		230
Sealing Power (W)	300×2		
Printing Heating Power (W)	40×2	50×2	40×2
Speed (m/min)	0-10		
Sealing Width (mm)	8 10		
Temperature Range (°C)	0-300		
Printing Type	Solid Ink Roller	Hot Foil Printer	Solid Ink Roller
Distance from Sealing Center to line Conveyor (mm)	20-80		100-500    100-700
Height from Head to Floor (mm)	—		700-1100
Conveyor Size (LxW) (mm)	1100×205		1400×250    1900×300
Max.Conveyor Loading for Single Bag (LxW) (mm)	2.5		5
Overall Conveyor Loading (Kg)	7.5		15
Dimension (LxWxH) (mm)	1100×610×1030		1450×680×1480
Net Weight (Kg)	85		100    108