



Discovery Enterprise: job sharing and integrity management within a mixed equipment environment

Enabling network connectivity throughout your print and mailroom facility, Discovery Enterprise provides a link to multiple Discovery Multiscan installations on all your printing, finishing and mailing equipment.

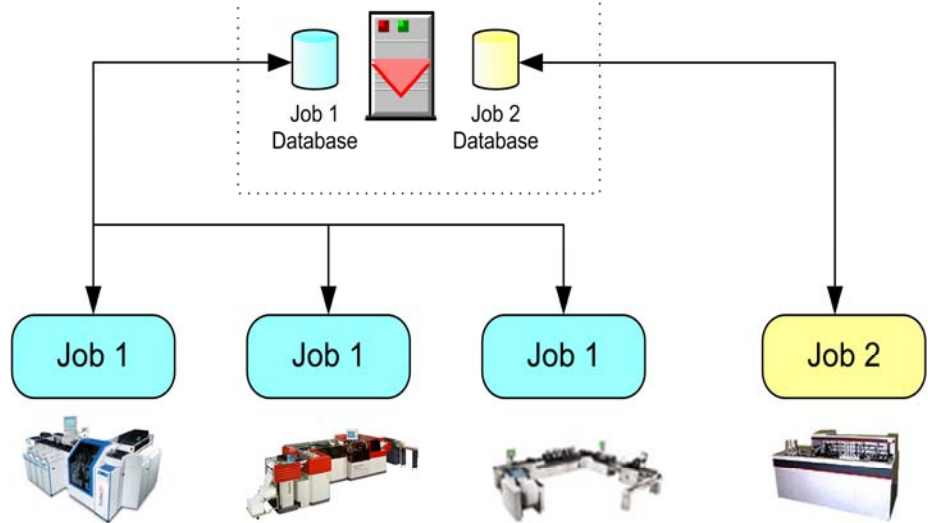
A Discovery Enterprise Solution combines multiple Discovery Multiscan installations with a Discovery Enterprise network and server. Delivering comprehensive integrity and productivity reports, Discovery Enterprise can reconcile print and mail jobs shared across multiple print and finishing processes within a facility.

A complete database of processed, missing, and duplicated pieces is available for each job or file at any stage of a document production process. Once completed each job data file can be imported into virtually any print system for easy re-print management.

When used in combination with Discovery Multiscan reports, a detailed report of each individual piece within a job provides an exportable audit trail and exceptions list for re-processing.



- Real time logging
- Duplicate Detection
- Real Time Reporting
- Complete ADF Loop



Exit Reading on ANY finishing equipment

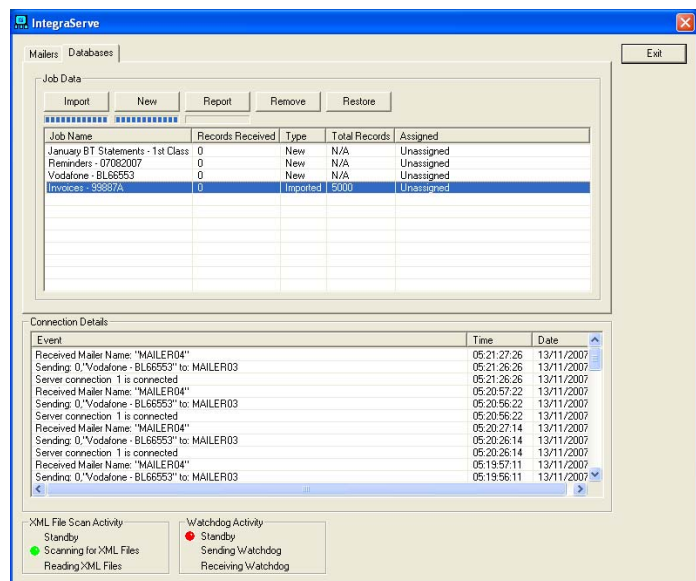
Discovery Enterprise maintains the crucial link between all stages of your document production process while providing real-time access to job status information.

Output Devices:

- Laser Printers
- Inkjet Bases
- Bindery Equipment
- Mail Inserters
- Mail Sort equipment

Error Management:

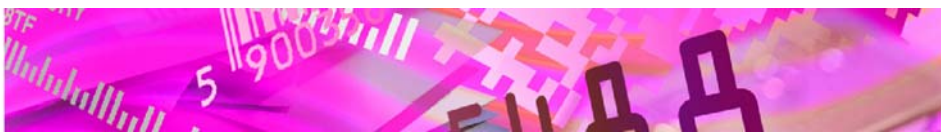
- Duplicate Detection
- Damaged Pieces
- Missing Documents



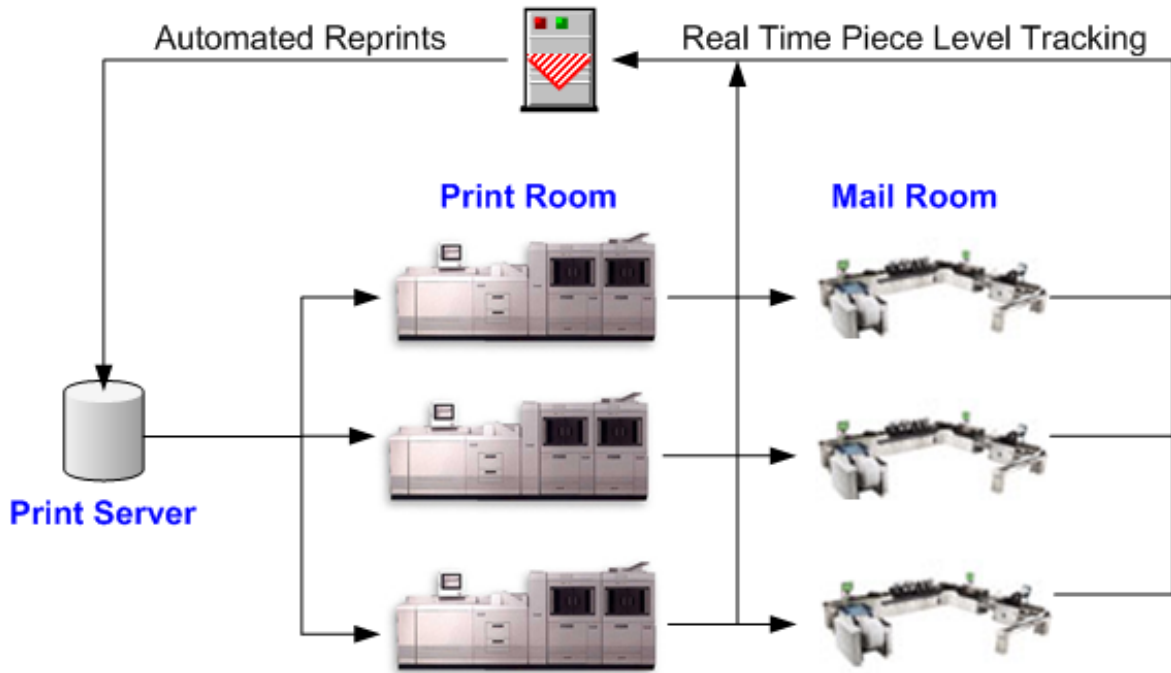
Job Name	Records Received	Type	Total Records	Assigned
January BT Statements - 1st Class	0	New	N/A	Unassigned
Reminders - 07082007	0	New	N/A	Unassigned
Vodafone - BL66553	0	New	N/A	Unassigned
Invoices - 96887A	0	Imported	5000	Unassigned

Event	Time	Date
Received Mailer Name: "MAILER04"	05:21:27:26	13/11/2007
Sending: 0:"Vodafone - BL66553" to: MAILER03	05:21:26:26	13/11/2007
Server connection: 1 is connected	05:21:26:26	13/11/2007
Received Mailer Name: "MAILER04"	05:20:59:22	13/11/2007
Sending: 0:"Vodafone - BL66553" to: MAILER03	05:20:56:22	13/11/2007
Server connection: 1 is connected	05:20:56:22	13/11/2007
Received Mailer Name: "MAILER04"	05:20:27:14	13/11/2007
Sending: 0:"Vodafone - BL66553" to: MAILER03	05:20:26:14	13/11/2007
Server connection: 1 is connected	05:20:26:14	13/11/2007
Received Mailer Name: "MAILER04"	05:13:57:11	13/11/2007
Sending: 0:"Vodafone - BL66553" to: MAILER03	05:13:56:11	13/11/2007





Complete ADF Loop

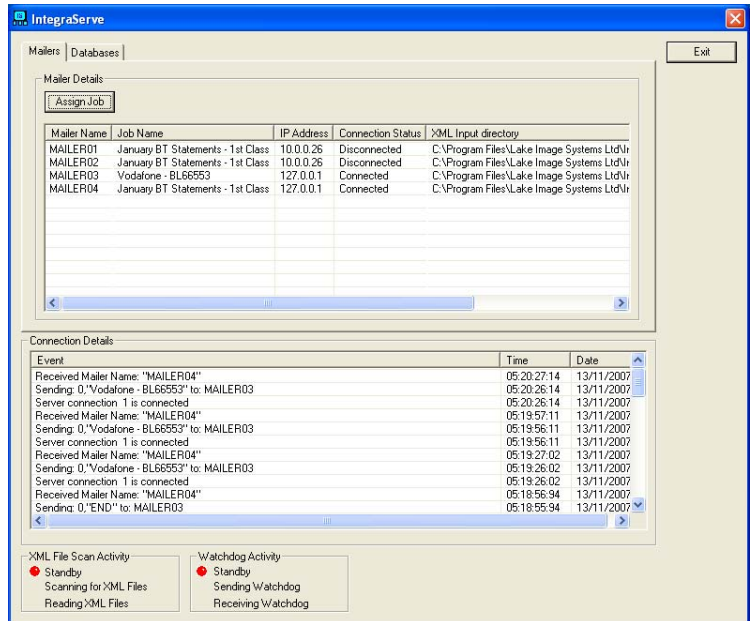


Discovery Enterprise

- Windows XP
- Unlimited Discovery Multiscan clients
- Up to 250,000 pieces per hour

Discovery Multiscan

- Camera and scanner input
- Decode OCR, BCR, 2D, OMR, Mag-stripe
- Machine level integrity inspection: file based and sequential
- Real time machine control: divert, stop, tray
- Match multiple fields and regions



UK & Europe



Lake Image Systems Ltd

The Forum Icknield Way Tring Hertfordshire HP23 4JX UK
 T: +44 (0) 1442 892700 F: +44 (0) 1442 892792 E:sales@lakeimage.com

Lake Image Systems France

165 Avenue du Prado 13272 MARSEILLE CEDEX 08 FRANCE
 T: +33 (0) 491 17 90 62 F:+33 (0) 491 17 90 63 E: euLIS@lakeimage.com

The Americas

Lake Image Systems, Inc.

205 Summit Point Drive Suite 2 Henrietta N.Y. 14467 USA
 T: +1 585 321 3630 F: +1 585 321 3788 E:salesna@lakeimage.com

Asia

Lake Image Systems Asia

Block 4008 Ang Mo Kio Ave 10, #02-19 Techplace 1 Singapore 569625
 T: +65 9722 3490 F: +44 1442 892 700 E: LISAsia@lakeimage.com



Lake Image Systems

www.lakeimage.com