



**Discovery PQ is the latest generation of Print Quality Inspections Solutions from Lake Image Systems. Featuring high resolution Line Scan cameras, Discovery PQ can acquire large format images of a continuous web for multiple, simultaneous, print quality and integrity inspections.**

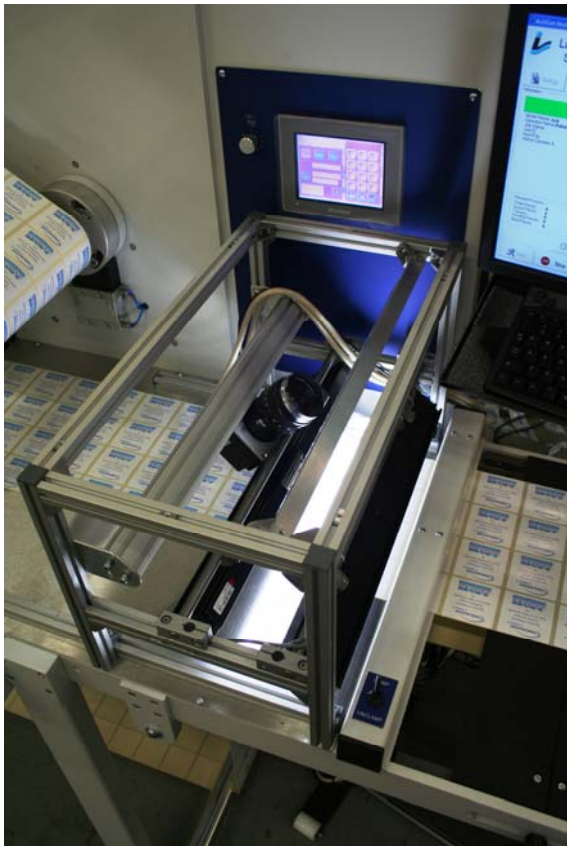
### Discovery PQ: Line Scan Technology

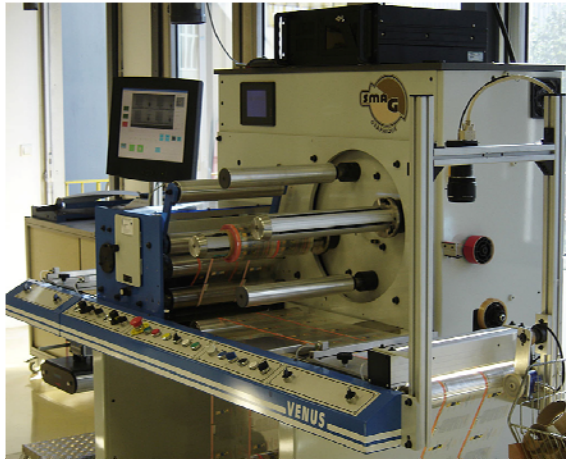
The line scan camera is capable of imaging an entire web for continuous printing applications. Unlike area scan cameras which capture a specific area of a document with one snapshot, line scan cameras have a single line array of sensors which process a target moving underneath the camera and build the image one entire line at a time.

**Discovery PQ** can acquire high resolution images of up to 6000 pixels wide at speeds up to 300m/min on all presses, narrow web label presses and rewinders.

### Print Quality Assured

- Discovery PQ immediately identifies print defects such as streaks and voids
- Alarms notify operators of defective print in real time. User defined tolerances stop false alarms
- Defect map gives coordinates and images of faults within a printed reel for easy identification and removal of defective print
- Quick return on investment. Run-on print is automatically calculated, preventing costly re-work and setup.
- Comprehensive reporting module for job and print run data assists job scheduling, productivity and quality assurance
- Simple user interface with touch screen operation
- Retrofittable installation to presses and rewinders: Enhance the performance of your existing equipment.
- Web stability frame, web guide and path rollers available when necessary.





Discovery PQ is ideal for web and re-winder applications, where print quality verification is paramount.

### Inspect & Display

- Foils
- Clear Films
- Flexible Packaging
- Variable Printing
- Labels, Cards & Tickets

## Input Devices

### Line Scan Cameras

2K, 4K or 6K Line Scan  
Color and B&W

### Triggering

High resolution encoder

## Processor/ Interface

### Operating System

Windows™ XP

### Processor

Intel Pentium IV

### Process Time

In excess of 1000ft/min

### Chassis

Standard PC or Industrial Rack (IP54 rated)  
Power 110-230VAC

### Approvals

CE/UL Certified

### Interface

Touch Screen Monitor

(Discovery PQ is configured with standard, secure network interface for remote service and support)

## Outputs

### Digital Outputs

Fully configurable, opto-isolated digital output lines

## Integration Hardware

### On Press

Standard press mounting kits

### Rewinders

Web stability frame, web guide and path rollers available when necessary

### UK & Europe



### The Americas

### Asia

### Lake Image Systems Ltd

The Forum Icknield Way Tring Hertfordshire HP23 4JX UK  
T: +44 (0) 1442 892700 F: +44 (0) 1442 892792 E: sales@lakeimage.com

### Lake Image Systems France

165 Avenue du Prado 13272 MARSEILLE CEDEX 08 FRANCE  
T: +33 (0) 491 17 90 62 F: +33 (0) 491 17 90 63 E: euLIS@lakeimage.com

### Lake Image Systems, Inc.

205 Summit Point Drive Suite 2 Henrietta N.Y. 14467 USA  
T: +1 585 321 3630 F: +1 585 321 3788 E: salesna@lakeimage.com

### Lake Image Systems Asia

Block 4008 Ang Mo Kio Ave 10, #02-19 Techplace 1 Singapore 569625  
T: +65 9722 3490 F: +44 1442 892 700 E: LISAsia@lakeimage.com



Lake Image Systems

[www.lakeimage.com](http://www.lakeimage.com)