

PW-320HS

SEMI-AUTO STRAPPING MACHINE

New digital display - "No Round Belt."

FEATURES:

- The advanced digital display allows the strapping tension to be adjusted at a touch. It also can show the figures from 5 to 50Kgs.
- "Super-tight strapping tension" equals Super-perfect performance.
- "Super-tight strapping tension", adjustable PP strap cooling time specially designed to make PP strap fastens well-in every time.
- "Electricity-saving" device, the motor automatically stops running after 60 seconds pause to reduce regular mechanical wear and to prolong the machine's life.
- The advanced PCB microchip circuit board control system, less malfunction and easy maintenance.
- Durable electro-magnetic clutch transmission means lesser mechanical wear and noise pollution.
- New heater plate design improves warm-up-time, welding speed and increases work efficiency.



Digital display for length and tension



APEXPACK



PW-620HS



FEATURE OF PW-620HS, LS, SLS:

Height can be adjusted. Each hole is 14 mm, one section. If lock 2 screws, can increase the height 70mm. If lock 1 screw, can increase the height 140mm.

OPTIONS:



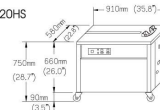
Legs and dispensers are disassembled to save transportation costs. 3 units packed in one pallet. 126 units loaded in a 20' feet container.



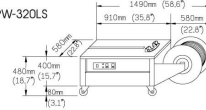
(For PW-620HS only)

Standard dispenser inside dia. is 200mm. If need dia.230 or 280 mm, the inner plates required.

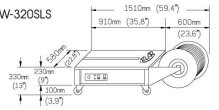
PW-320HS



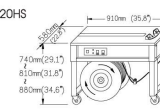
PW-320LS



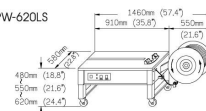
PW-320SLS



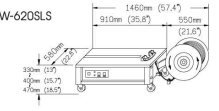
PW-620HS



PW-620LS



PW-620SLS



SPECIFICATIONS:

Model	PW-320HS PW-620HS	PW-320LS PW-620LS	PW-320SLS PW-620SLS
Power supply	1 φ AC110-220V(50/60Hz), 1/4HP		
Strap width	9, 12, 15.5(mm) (adjustable)		
Tension strength	15-50kgs		
Strapping speed	2.0 sec./strap		
Min. package size	60mm		
Max. package size	Any size		
Dimension(LxWxH) (mm)	910x580x750(320HS) 910x580x740(620HS)	1490x580x480(320LS) 1460x580x480(620LS)	1510x580x330(320SLS) 1460x580x330(620SLS)
N.W.	100kgs	90kgs	80kgs
G.W.	120kgs	110kgs	90kgs
Packing size (LxWxH)(mm)	956x626x842 (320HS) 956x626x914 (620HS)	956x626x592 (320LS) 956x626x992 (620LS)	956x626x746 (320SLS) 956x626x429 (620SLS)

Note: Specifications subject to change without notice.

Distributor:

PW-0860AS2R Fully-auto strapping machine

With top roller drive & 2 sensors Patent No:150314

FEATURES:

- Easy access fold open table top—easy to maintain
- Strapping position- just adjust the position of sensors
- Aluminum alloy for main strapping head is solid and durable, control system is compatible and built for 24 hours constant operation with extra safety devices.
- Reliable design-Power roller drive offers stable effective, durability and run good performance
- Two types: Power roller or power belt drive
- Individual uses or integrate with conveyors designed for auto packaging system.



APEXPACK®



CE

**TAIWAN
EXCELLENCE
2007**

PW-0860AS2B

Fully-auto strapping machine
With top belt drive & 2 sensors



Options:

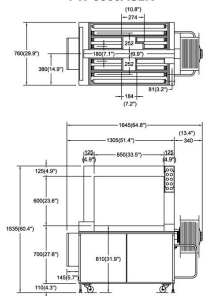
- Detection for strapping to end (head switch)
- 3 or 4 sensors
- Top press platform
- Extra safety devices including safety covers between rollers, Safety switch installed under table rollers, No box, no strap.

ARCH SIZE:

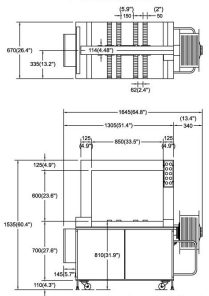
W	650	850	1050	1250	1450	1650	1850	2050	2250	2450
H	400	600	800	1000	1200	1400	1600	1800	2000	2200
(15.7")	Δ	Δ	Δ	Δ	Δ	Δ	Δ	Δ	Δ	Δ
(23.6")	Δ	S	Δ	Δ	Δ	Δ	Δ	Δ	Δ	Δ
(31.5")	Δ	Δ	Δ	Δ	Δ	Δ	Δ	Δ	Δ	Δ
(38.4")	Δ	Δ	Δ	Δ	Δ	Δ	Δ	Δ	Δ	Δ
(47.2")	Δ	Δ	Δ	Δ	Δ	Δ	Δ	Δ	Δ	Δ

S= Standard arch Δ= Made on request ▲= Extra arch motor

PW-0860AS2R



PW-0860AS2B



size : mm / inch

SPECIFICATIONS :

	PW-0860AS2R	PW-0860AS2B
Model	30, 220V, 380V, 440V(50/60Hz)	30, 220V, 380V, 440V(50/60Hz)
Power supply	30, 220V, 380V, 440V(50/60Hz)	30, 220V, 380V, 440V(50/60Hz)
Strap width	9, 12, 15.5, 19 mm	9, 12, 15.5, 19 mm
Tension adjustment	0-70 kgs (Adjustable)	0-70 kgs (Adjustable)
Speed	2.4sec./per strap	2.4sec./per strap
Power Consumption	1250W	1250W
Max. package size	W850 x H600mm(W33.5" x H23.6")	W850 x H600mm(W33.5" x H23.6")
Min. package size	L350 x W400 x H30(mm) L13.7" x W15.7" x H1.2"	L200 x W200 x H30(mm) L7.8" x W7.8" x H1.2"
Machine size	L1645 x W760 x H1535(mm)	L1645 x W760 x H1535(mm)
Shipping size	L1680 x W850 x H1700(mm)	L1680 x W720 x H1700(mm)
Net weight	330kgs / 726 (lbs)	300kgs / 660 (lbs)
Gross weight	390kgs / 850 (lbs)	360kgs / 792 (lbs)

Note: Specifications subject to change without notice.

Distributor:

1st version:2001.03 2nd version:2008.02